

October 2006



## Series II Home Manager System

*Bringing New Life to your Home Manager System*

The Series II Home Manager System has been designed as an upgrade replacement to the popular Unity Systems Home Manager system installed in many homes in the late 80's and early 90's. The original Home Manager was the first commercially viable home automation systems that all others have been compared with. The system served well for many years, but time has revealed many weaknesses of the original system and many improvements have been made since the demise of the original manufacturer in 1999. The Series II Home Manager utilizes the existing wiring infrastructure of the original Home Manager so upgrading typically does not require any additional wiring.

The zoned temperature control capabilities of the Home Manager remain second to none in performance and control of temperatures in the home. The Series II system takes full advantage of this functionality, adds some nice features and introduces a rich user interface to the new Touchscreen that allows the temperature control module to be even easier to use than before.

The Security/Fire Alarm module is completely new and brings to the system a level of control and reliability expected in today's life safety systems while still being completely integrated with the other modules.

The ability to control and schedule lighting and appliance modules is enhanced further and yet is still completely "user configurable" to allow complete operation by the homeowner.



- Available for all versions of the original Home Manager
- Full Color Touchscreen uses LCD Touchscreen technology and substantially less energy to operate
- New Keypads provide improved operation of security and light control
- Improved Lightning Strike protection and backup battery capacity
- Improved Touchscreen graphics provide ease of use by any member of the house
- Capacity of Security & Fire Alarm module increased to 99 sensors to allow for optimal control of system
- Touchscreen available in black or white trim colors
- Expandable to incorporate additional modules to control irrigation sprinklers, pool/spa equipment, gates and surveillance cameras, etc, etc



7060 Koll Center Parkway  
Pleasanton, CA 94566  
(925) 600-9680  
[www.thehomeworksgroup.com](http://www.thehomeworksgroup.com)

# Temperature Control Module

The temperature control capabilities of most Home Manager systems allow for independent control of room temperatures throughout the home. This allows the user to vary the desired temperature on a room by room basis so as to condition only the rooms in use. Or, the user can simply have all the rooms comfortable all the time. Either way the independent control capabilities of the Home Manager provides the most efficient means of heating and cooling your home. Having temperature sensors in each room allows the system to know the actual temperature in each room. The system then compares these temperatures with the desired temperatures. When appropriate the system turns on the proper furnace or air conditioner and distributes the air to the rooms that need it. All of this capability is completely preserved in the new Series II Home Manager System.



*Traditional Thermostat based systems just can't compare to the efficiencies of the Series II Home Manager. Imagine trying to keep every room of the main floor in your home comfortable based on a thermostat located in the hallway!*

On the Series II Home Manager new floorplan graphics are utilized providing a much clearer and attractive view. Each temperature zone is depicted on the floorplan clearly showing the actual temperature and current set points for that zone.



Select any temperature zone by simply pushing its button on the floorplan to reveal the schedule for that zone. Establish your desired temperature schedules for that zone by pushing the appropriate button and making the changes on the keypads that pop up. You can elect to maintain a desired temperature all day long or set up to six transitions if so desired.

A new "Vacation Mode" allows you to instantly put the entire home into a setback mode whereby all the rooms revert to pre designated lower temperatures to maximize energy savings while you are away from your home.

**(925) 600-9680**

**THE  
HOMWORKS  
GROUP**

## *Security & Fire Alarm Module*

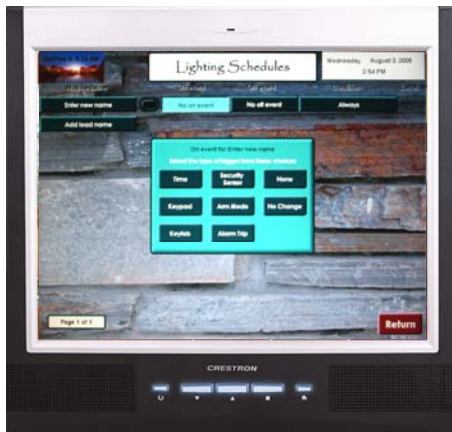
The original Home Manager system had a long list of deficiencies with the Security & Fire Module that needed much attention. The inability to reset the smoke sensors, the inability to understand the status of the system from the keypads, the shortage of capacity and lack of reliability have been sources of frustration for many Home Manager owners.

The Security & Fire Alarm Module in the Series II Home Manager brings a first class protection system into your home to provide your family with a life safety system you can feel confident with. The main Security page on the Touchscreen depicts the status of every sensor on the system at a glance. New keypads provide constant status of the system and are much easier to operate than previous units. Upon any alarm, the cause of the alarm will be apparent at the keypads and Touchscreen and the system is easily disabled at either location. If utilizing the services of our 24 hour central monitoring station, our operators are also informed of the specific cause of the alarm which allows for more concise information to be provided to the appropriate authorities.

The system also supports multiple partitions to allow for independent operation of a separate area (guest house, barn, detached garage, etc) if so desired.



## *Lighting & Appliance Control Module*



The Lighting & Appliance Module of the Home Manager has always been very powerful in its ability to control and schedule desired lights inside and outside the home. The Series II system improves the capabilities even further. Any light can be scheduled to automatically turn on at a particular time or event (a door opening, arming or disarming the security system, sunset, etc). Any light may also be set to turn on upon a user command at any keypad or portable keyfob. Multiple lights can be triggered by the same event so as to create a desired scene. The system comes standard with the ability to control X-10 type modules (same as original Home Manager) and can optionally be equipped to control newer light modules based newer robust technology.

All settings are easily performed by the user any time desired.

## *Improved Power Management*

Proper management of the incoming AC power and backup batteries is critical to maintaining the integrity of your Home Manager system. The Series II System includes a 1,000VA Surge Protection / Uninterruptible Power Supply (UPS) that provides substantial protection of your system from lightning strikes and other power surges while also providing several hours of backup power during power outages. The UPS is rack mounted and typically installed in a vertical bracket next to the Home Manager System enclosure.

*Embellish your Home Manager further and gain even more control of your home with the following additional Control Modules available only for the Series II system.*



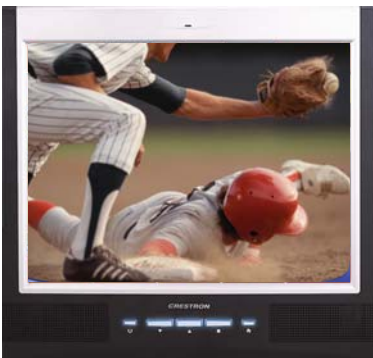
## ***Pool Control Module***

Operate your pool, spa and water features from the Touchscreen and quickly turn your spa on from any keypad in the house.



## ***Irrigation Sprinkler Control Module***

Establish your sprinkler schedules easily from the Touchscreen with this highly capable sprinkler controller that finally brings easy use and high capability to the homeowner. Up to four schedules can be created with two available start times each. Manual override feature is available to manually operate any sprinkler any time and a rain sensor automatically disables sprinklers for a predetermined number of days.



## ***Surveillance Camera Module***

Add cameras and a digital video recorder (DVR) to your Series II Home Manager system and view any live or recorded video from the Touchscreen. Typical setup allows for up to 60 days of history so it is easy to review any recent activities of interest. Up to 16 cameras can be accommodated on the module.



## ***Remote Access Module***

The capabilities of this module allow the homeowner to access the entire Series II Home Manager system from any internet connected laptop or desktop computer and view and control the system as if in front of the Touchscreen itself. The mouse on the computer replaces the Touchscreen functionality.

**THE  
HOMWORKS  
GROUP**

**(925) 600-9680**

7060 Koll Center Parkway  
Pleasanton, CA 94566  
(925) 600-9680  
[www.thehomeworksgroup.com](http://www.thehomeworksgroup.com)